

H58 – Modern apartments and penthouses in Limassol (Germasogeia district) 100 meters to the sea

Property status: Project delivered

Location: Cyprus, Limassol, Potamos Germasogeias district



This residential building is located in lower Germasogeia, Limassol, in very close proximity to the seafront. Boasting sea views from all apartments, this niche and eco-friendly development offers unparalleled amenities whilst providing ease and comfort. The project offers a selection of large 2 or 3-bedroom splendid apartments. Large, open plan design makes the interiors look bright, elegant and modern, making perfect homes to relax, along with providing the ideal space to entertain guests. Each apartment features modern Italian kitchens, ample storage space and large balconies with sea views.

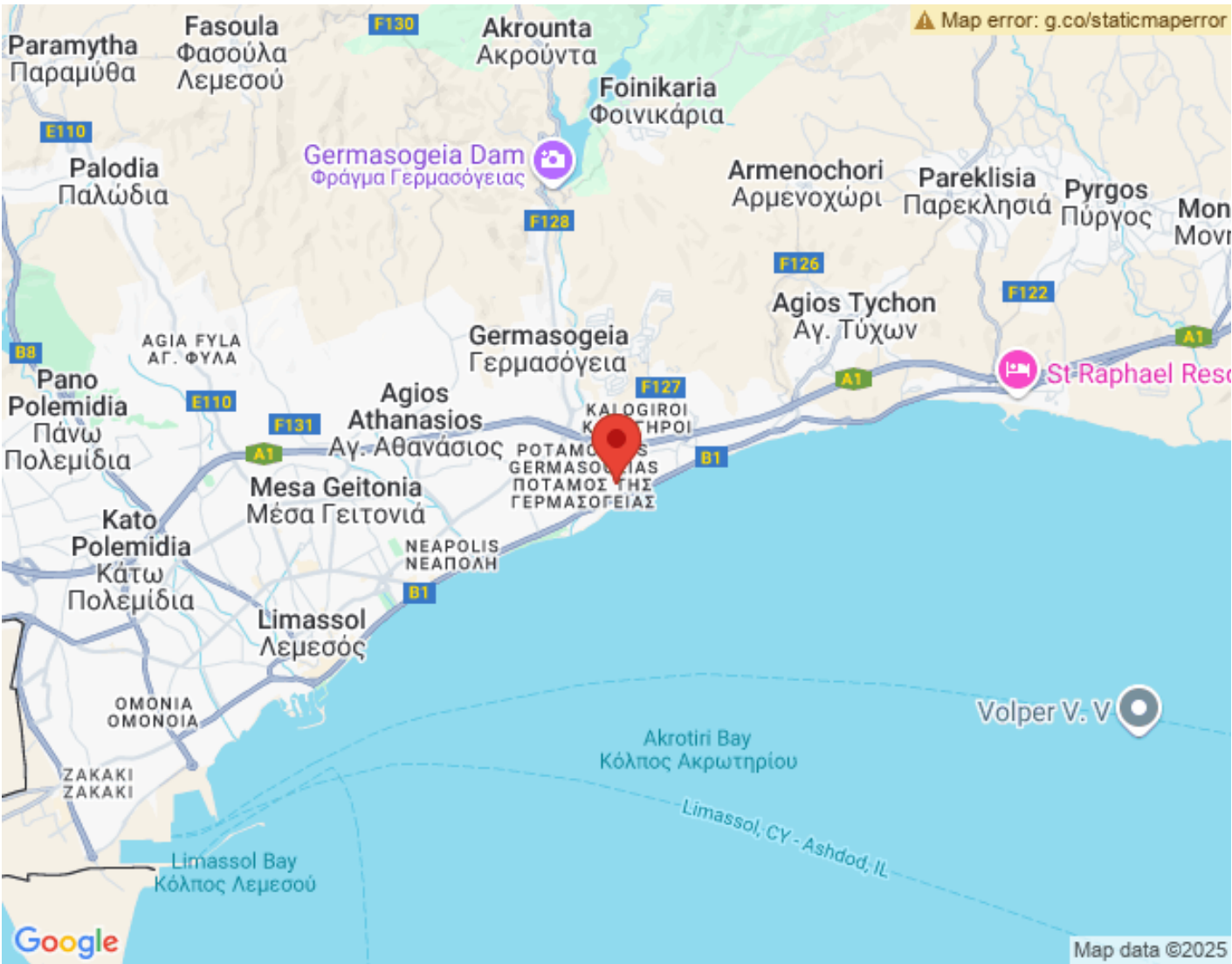
The Project has EPC certificate with "B" Energy Efficiency Rating

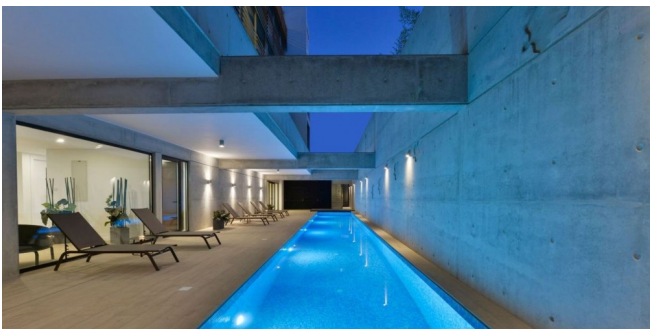
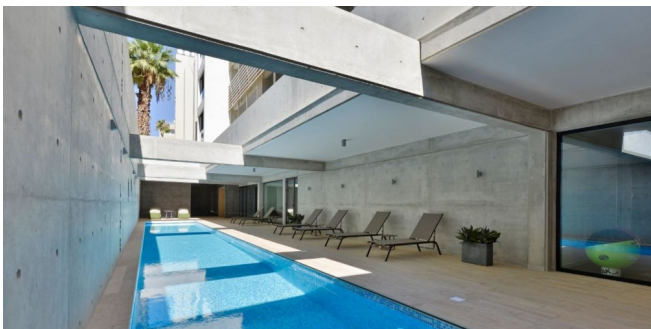
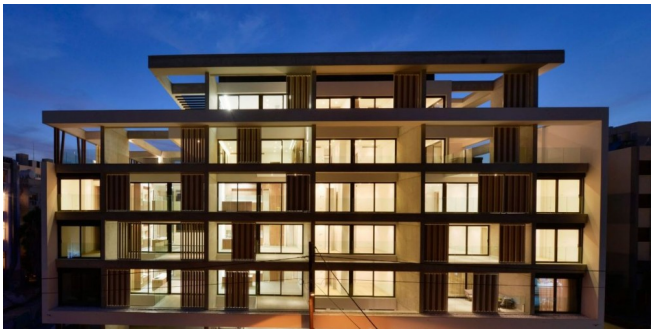
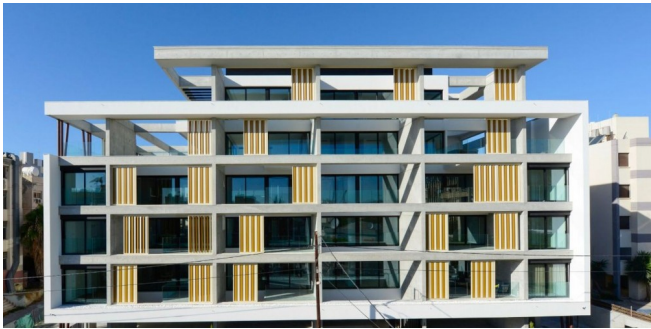
Area & Prices

Sold & Reserved Properties

Sold & Reserved Properties	
101 - Apartment	Beds: 2; 174 m ² Sold
102 - Apartment	Beds: 2; 130 m ² Reserved
103 - Apartment	Beds: 3; 188 m ² Sold
201 - Apartment	Beds: 2; 174 m ² Reserved
202 - Apartment	Beds: 2; 130 m ² Sold
203 - Apartment	Beds: 3; 188 m ² Reserved
301 - Apartment	Beds: 2; 174 m ² Sold
302 - Apartment	Beds: 2; 130 m ² Sold
303 - Apartment	Beds: 3; 188 m ² Sold
401 - Penthouse	Beds: 3; 409 m ² Reserved
501 - Penthouse	Beds: 3; 224 m ² Sold

Map Location





Site Map & Floor Plans

