

L10 – Residential building of 10 spacious apartments in Limassol

Property status: Project delivered

Location: Cyprus, Limassol, Columbia (Eastern district of Limassol)



This residential building consists of 10 spacious apartments. On the ground floor there are parking spaces for every flat with three entrances for easy access and store rooms. Also the building has a communal indoor heated swimming pool and jacuzzi with change rooms, toilets and a nice deck where residents can sit, relax and enjoy their free time. Also the residents can enjoy a glass lift which provides view to the swimming pool on the way up and down.

This resale apartment has the following features:

- Air-conditions VRV
- Floor heating
- Solar Panel
- Reservoir tank
- Pressure system
- 2 bathrooms

The Project has EPC certificate with "A" Energy Efficiency Rating.

Area & Prices

2 -Apartment

€ 480,000 no VAT

Beds: 2 Area: 113 m²

Inside Area: 92 m2

Covered Veranda: 21 m2

Price per sq.m: € 4,248

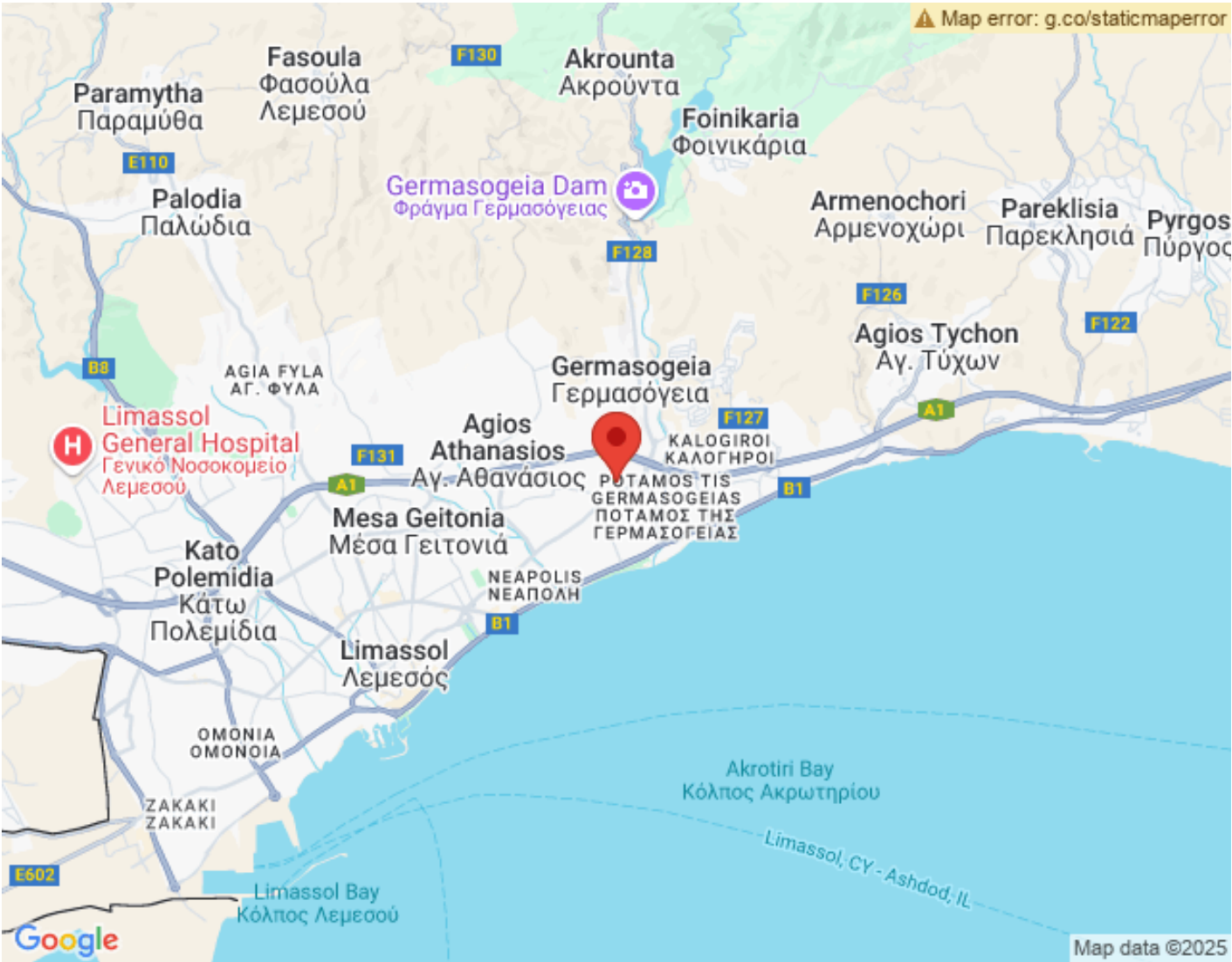
Storage Room: 2

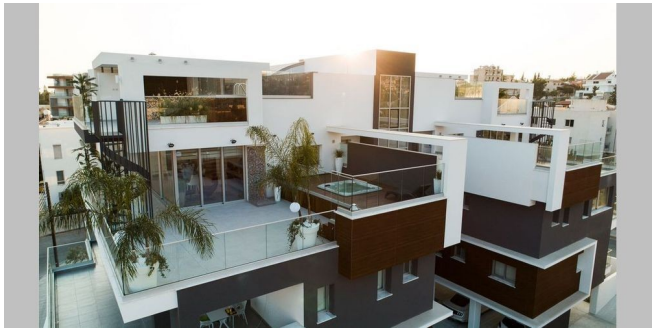
Swimming Pool: communal

Sold & Reserved Properties

Sold & Reserved Properties	
31 - Penthouse	Beds: 3; 338 m ² Sold
32 - Penthouse	Beds: 3; 338 m ² Sold

Map Location







Site Map & Floor Plans

