

Mo8 – Residential building of contemporary apartments in short distance to the sea, in Limassol

Property status: Delivery - February 2026. The project is off plan

Location: Cyprus, Limassol (Potamos Germasogeias district)



This residential complex offers a distinctive layout of 18 apartments spread across four interconnected blocks, positioned in a quiet area near both the coast and city infrastructure. Located within walking distance of the beach and a major commercial avenue, the development combines access to daily conveniences with privacy and functional living space. The project includes simplex, duplex, and triplex units with two and three bedrooms. All apartments are designed with a focus on maximizing space, natural light, and ventilation. Private and communal outdoor areas include landscaped terraces, roof gardens, and infinity pools in selected units. Each residence features covered parking, high-spec finishes, and a structural layout that eliminates traditional corridors, enhancing openness and comfort. The architectural design incorporates a passive solar approach, energy-efficient glazing, and rooftop photovoltaic systems. All apartments meet the Nearly Zero Energy Building (NZEB) standard and are rated "A" for energy efficiency. Interiors are completed with premium materials, wood accents, modern kitchens, marble or wooden flooring, and designer lighting. The complex also offers advanced climate control systems, smart home integration options, and security features including video intercom and alarm systems.

Residents benefit from communal and private swimming pools, designated parking (with two spaces for triplexes), and roof gardens equipped with outdoor kitchen bars and Jacuzzi provisions. All plumbing and HVAC systems are optimized for sustainability and comfort, with water treatment, heat pump technology, and underfloor heating throughout.

The main features of the project and the units:

- Located in the Papas Area, Limassol
- 18 apartments: simplex, duplex, and triplex layouts
- 14 three-bedroom units and 4 two-bedroom units
- Covered parking for all units; two spaces for triplexes
- Landscaped roof gardens with kitchen bars and Jacuzzi provision
- Private and communal swimming pools (infinity pools for select units)
- Natural marble or semi-solid wood flooring
- Designer kitchens with matching wall panels
- Sanitary ware by top European brands
- Video intercom, alarm system, and secure entry
- Photovoltaic panels for electricity and hot water production
- Energy class A; NZEB-compliant (25% solar energy)
- Underfloor heating and VRV air-conditioning with concealed ducting
- Smart home system provision for lighting, blinds, sound, and HVAC
- Centralized water system with filtration and treatment
- South-facing orientation for passive solar benefit
- Floor-to-ceiling glazed windows with shading elements

The project has an EPC certificate with “A” energy efficiency rating.

Area & Prices

101 -Apartment

€ 855,000 + VAT

Beds: 2 Area: 113 m²

Inside Area: 85 m2

Covered Veranda: 14 m2

Price per sq.m: € 7,566

Storage Room: 2

Swimming Pool: private

102 -Apartment

€ 1,430,000 + VAT

Beds: 3 Area: 212 m²

Inside Area: 125 m2

Covered Veranda: 28 m2

Price per sq.m: € 6,745

Storage Room: 2

Swimming Pool: private

103 -Apartment

€ 1,450,000 + VAT

Beds: 3 Area: 212 m²

Inside Area: 125 m2

Covered Veranda: 28 m2

Price per sq.m: € 6,840

Storage Room: 2

Swimming Pool: private

104 -Apartment

€ 1,450,000 + VAT

Beds: 3 Area: 212 m²

Inside Area: 125 m2

Covered Veranda: 28 m2

Price per sq.m: € 6,840

Storage Room: 2

Swimming Pool: private

105 -Apartment

€ 1,430,000 + VAT

Beds: 3 Area: 212 m²

105 -Apartment

€ 1,430,000 + VAT

Beds: 3 Area: 212 m²

Inside Area: 125 m2

Covered Veranda: 28 m2

Price per sq.m: € 6,745

Storage Room: 2

Swimming Pool: private

106 -Apartment

€ 855,000 + VAT

Beds: 2 Area: 113 m²

Inside Area: 85 m2

Covered Veranda: 14 m2

Price per sq.m: € 7,566

Storage Room: 2

Swimming Pool: communal

201 -Two-level penthouse

€ 1,720,000 + VAT

Beds: 3 Area: 237 m²

Inside Area: 148 m2

Covered Veranda: 53 m2

Price per sq.m: € 7,257

Storage Room: 2

Swimming Pool: communal

202 -Two-level penthouse

€ 1,720,000 + VAT

Beds: 3 Area: 237 m²

Inside Area: 148 m2

Covered Veranda: 53 m2

Price per sq.m: € 7,257

Storage Room: 2

Swimming Pool: communal

203 -Two-level penthouse

€ 1,705,000 + VAT

Beds: 3 Area: 237 m²

Inside Area: 148 m2

Covered Veranda: 53 m2

Price per sq.m: € 7,194

Storage Room: 2

Swimming Pool: communal

204 -Two-level penthouse

€ 1,705,000 + VAT

Beds: 3 Area: 237 m²

204 -Two-level penthouse

€ 1,705,000 + VAT

Beds: 3 Area: 237 m²

Inside Area: 148 m2

Covered Veranda: 53 m2

Price per sq.m: € 7,194

Storage Room: 2

Swimming Pool: communal

205 -Apartment

€ 855,000 + VAT

Beds: 2 Area: 113 m²

Inside Area: 85 m2

Covered Veranda: 14 m2

Price per sq.m: € 7,566

Storage Room: 2

Swimming Pool: communal

206 -Apartment

€ 855,000 + VAT

Beds: 2 Area: 113 m²

Inside Area: 85 m2

Covered Veranda: 14 m2

Price per sq.m: € 7,566

Storage Room: 2

Swimming Pool: communal

301 -Three-level Penthouse

€ 2,050,000 + VAT

Beds: 3 Area: 311 m²

Inside Area: 175 m2

Covered Veranda: 40 m2

Price per sq.m: € 6,592

Storage Room: 2

Swimming Pool: communal

302 -Three-level Penthouse

€ 2,050,000 + VAT

Beds: 3 Area: 311 m²

Inside Area: 175 m2

Covered Veranda: 40 m2

Price per sq.m: € 6,592

Storage Room: 2

Swimming Pool: communal

401 -Two-level penthouse

€ 1,680,000 + VAT

Beds: 3 Area: 246 m²

401 -Two-level penthouse

€ 1,680,000 + VAT

Beds: 3 Area: 246 m²

Inside Area: 125 m2

Covered Veranda: 57 m2

Price per sq.m: € 6,829

Storage Room: 2

Swimming Pool: communal

402 -Two-level penthouse

€ 1,595,000 + VAT

Beds: 3 Area: 234 m²

Inside Area: 125 m2

Covered Veranda: 45 m2

Price per sq.m: € 6,816

Storage Room: 2

Swimming Pool: communal

403 -Two-level penthouse

€ 1,595,000 + VAT

Beds: 3 Area: 234 m²

Inside Area: 125 m2

Covered Veranda: 45 m2

Price per sq.m: € 6,816

Storage Room: 2

Swimming Pool: communal

404 -Two-level penthouse

€ 1,680,000 + VAT

Beds: 3 Area: 246 m²

Inside Area: 125 m2

Covered Veranda: 57 m2

Price per sq.m: € 6,829

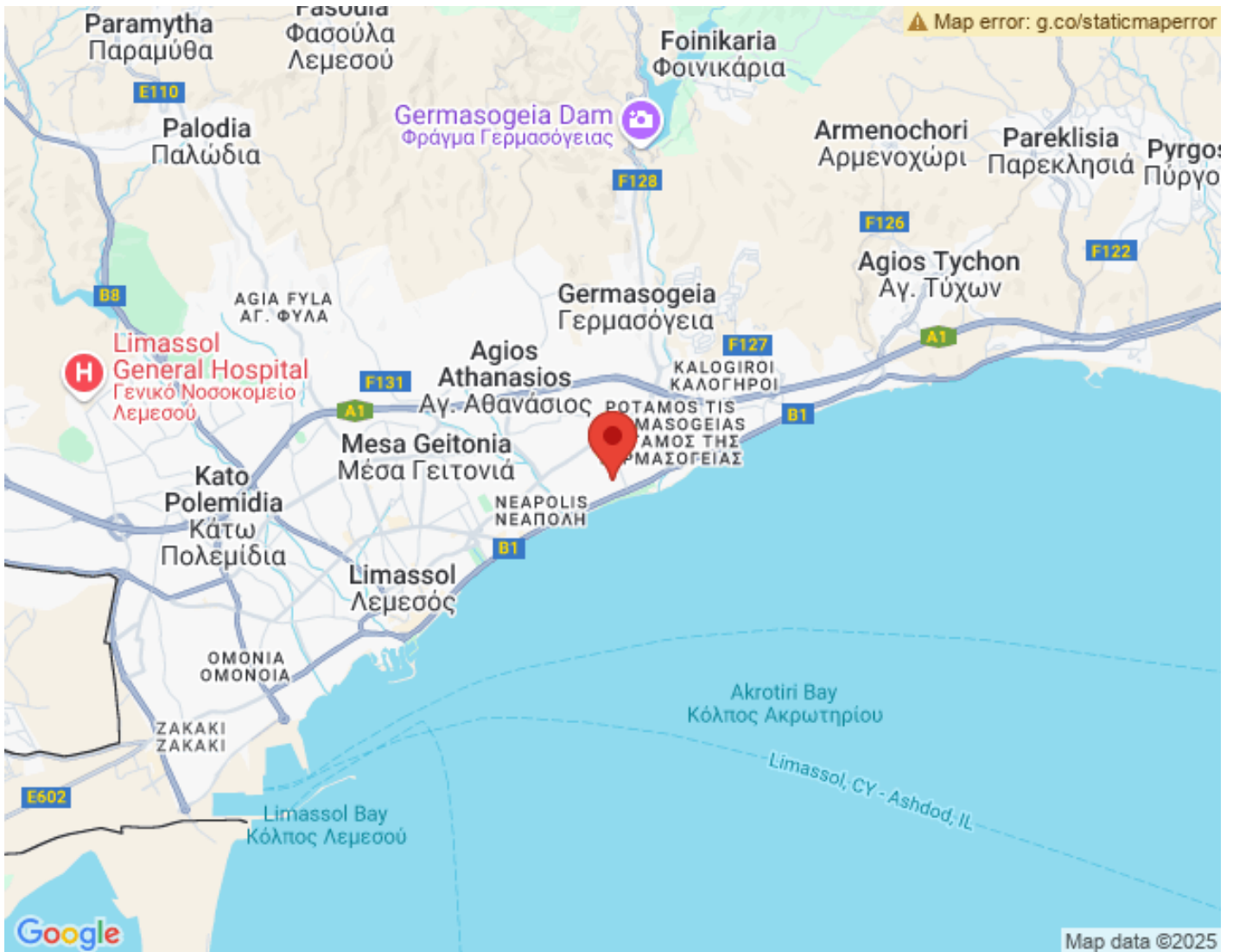
Storage Room: 2

Swimming Pool: communal

Sold & Reserved Properties

Sold & Reserved Properties

Map Location







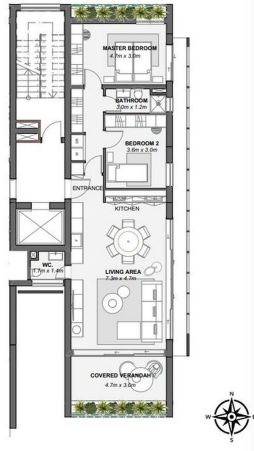
Site Map & Floor Plans

FLOOR PLAN

1ST FLOOR

TWO-BEDROOM SIMPLEX APARTMENTS

Indoor Area	85 m ²
Covered Veranda	14 m ²
Uncovered Veranda	-
Common Area Share	14 m ²
Store Room	6 m ²
Total Covered Area	119 m ²
Restrooms	2
Private Pool	NO
Jacuzzi	NO
Roof Garden	NO
Fireplace	NO
Parking Spaces	1

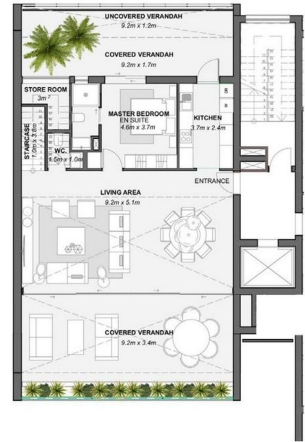


FLOOR PLANS

2ND FLOOR

THREE-BEDROOM DUPLEX APARTMENTS

Indoor Area	148 m ²
Covered Veranda	53 m ²
Uncovered Veranda	12 m ²
Common Area Share	24 m ²
Store Room	9 m ²
Total Covered Area	233 m ²
Restrooms	4
Private Pool	NO
Jacuzzi	NO
Roof Garden	NO
Fireplace	NO
Parking Spaces	1



FLOOR PLAN

1ST FLOOR

THREE-BEDROOM SIMPLEX APARTMENTS

Indoor Area	125 m ²
Covered Veranda	28 m ²
Uncovered Veranda	39 m ²
Common Area Share	20 m ²
Store Room	6 m ²
Total Covered Area	179 m ²
Restrooms	2
Private Pool	YES
Jacuzzi	NO
Roof Garden	NO
Fireplace	YES
Parking Spaces	1

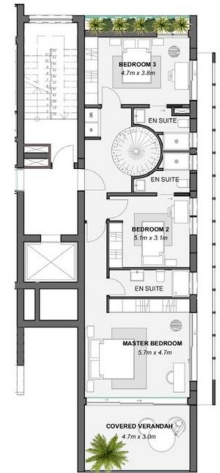


FLOOR PLANS

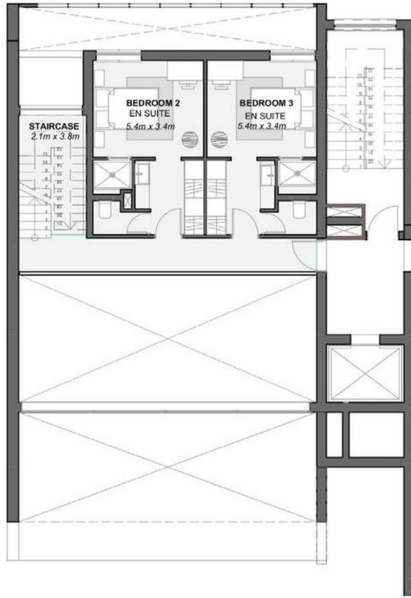
3RD FLOOR

THREE-BEDROOM TRIPLEX PENTHOUSES

Indoor Area	175 m ²
Covered Veranda	40 m ²
Uncovered Veranda	68 m ²
Common Area Share	28 m ²
Store Room	6 m ²
Total Covered Area	249 m ²
Restrooms	5
Private Pool	NO
Jacuzzi	YES
Roof Garden	YES
Fireplace	NO
Parking Spaces	2



3RD FLOOR



4TH FLOOR



5TH FLOOR
ROOF TERRACE



5TH FLOOR
ROOF TERRACE



FLOOR PLANS

THREE-BEDROOM DUPLEX PENTHOUSES

Indoor Area	125 m ²
Covered Veranda	57 m ²
Uncovered Veranda	44 m ²
Common Area Share	20 m ²
Store Room	10 m ²
Total Covered Area	211 m ²
Restrooms	2
Private Pool	NO
Jacuzzi	YES
Roof Garden	YES
Fireplace	YES
Parking Spaces	1

TYPE E

4TH FLOOR

