

N43 – Apartments in Limassol center, in 150 meters from the sea

Property status: Project delivered

Location: Cyprus, Limassol district of Neapolis



The project is located in the central part of Limassol, just 150 meters from the sea. The building will consist of only 4 spacious apartments, one apartment per floor. The upper apartment will have a roof garden. Each apartment will have assigned 2 parking spaces, and a storage room. All amenities, as well as the beachfront, are in walking distance from the development.

Other specifications:

- Marble or granite flooring and stairs
- Video phone system
- Burglar alarm
- Full installation of central heating-cooling (VRV)
- Italian kitchens
- Italian doors

The Project has EPC certificate with "B" Energy Efficiency Rating

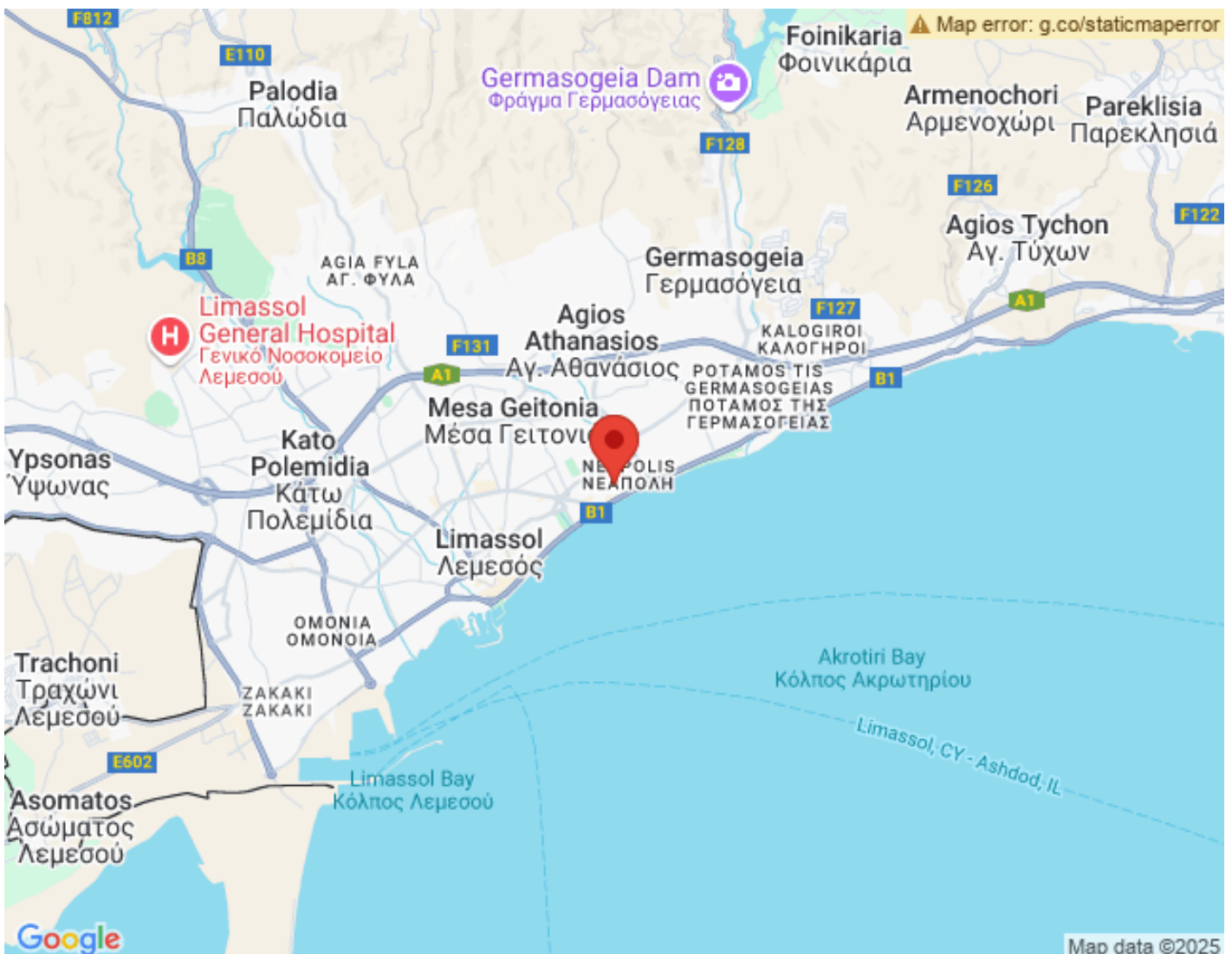
Area & Prices

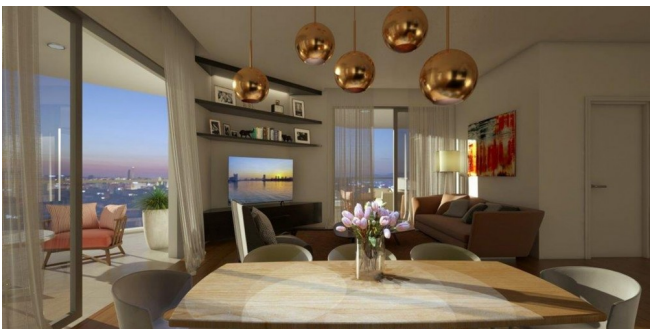
Sold & Reserved Properties

Sold & Reserved Properties

101 - Apartment	Beds: 4; 229 m ² Sold
201 - Apartment	Beds: 4; 230 m ² Sold
301 - Apartment	Beds: 4; 231 m ² Sold
401 - Apartment	Beds: 4; 295 m ² Sold

Map Location





Site Map & Floor Plans

